

# American Chemical Manufacturing Summit

**Advancing EHS Excellence - Driving  
Safety, Stewardship, and Capability  
Across Global Operations**

Dec 9-10, 2025

Houston, TX

**Lyndee Brassieur**  
Vice President, EHS  
PPG



We protect and  
beautify the world®

# We Are 'One PPG' Working Safely Together

This month's theme:

**The Leader in Me!**

Sometimes when you are least aware of it... you are leading safety.



# Agenda

- PPG Overview
- Advancing EHS Excellence: a continuous improvement journey
  - EHS Management System
  - Stagnation: A call to action
  - Risk Based / Data Driven Approach
  - Cultural / People connection programs
- What's next? 2026 and beyond



# Our strategic business units are divided into three segments

~25%

## Global Architectural Coatings

Strong #1 or #2 in more than 15 countries



Architectural EMEA



Architectural LATAM and AP

~35%

## Performance Coatings

Differentiated products and services



Aerospace



Automotive Refinish



Protective and Marine Coatings



Traffic Solutions

~40%

## Industrial Coatings

Technologically advanced products



Automotive OEM Coatings



Industrial Coatings



Packaging Coatings



Specialty Products



# PPG EHS – Global Coverage

Operations	Field Safety	Product Stewardship	Support Functions
<ul style="list-style-type: none"><li>• Plants, DC's, ASCs, Stores</li><li>• Paints, Coatings, Resins, Transparencies, Adhesives, Sealants, Sundries, Specialty</li></ul>	<ul style="list-style-type: none"><li>• Field Technicians / Inspectors</li><li>• Driver Safety</li><li>• PPG employees at customer locations</li></ul>	<ul style="list-style-type: none"><li>• Product Regulatory Support</li><li>• 40,000 PS Pulse cases/year</li><li>• Chemical Registrations</li><li>• 2.5 Million SDSs, 41 languages</li><li>• 1.4 Million Sales Codes</li></ul>	<ul style="list-style-type: none"><li>• Headquarters locations</li><li>• Functional support employees</li></ul>



Manufacturing /  
ACS Sites



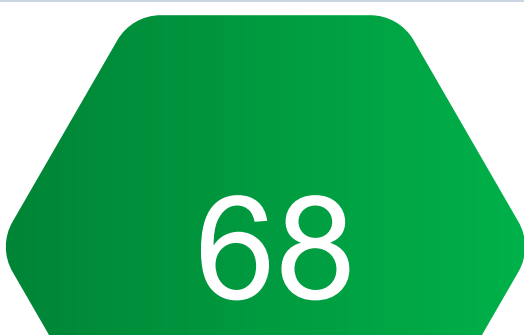
Labs  
(Stand-Alone)



Field Employees  
(~5,000 Drivers)



Stores  
(Rest of World)



Countries  
Supported



Distribution  
Centers



Employees



Field Sales,  
Service, Offices,  
Training Centers



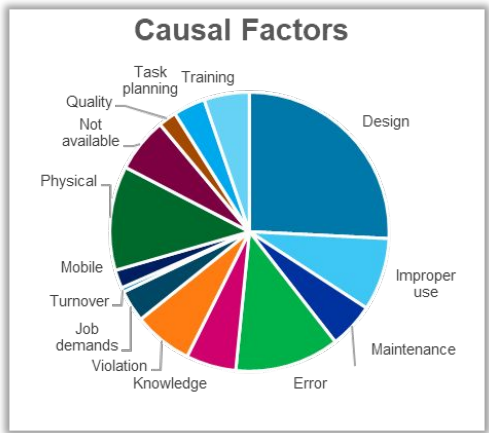
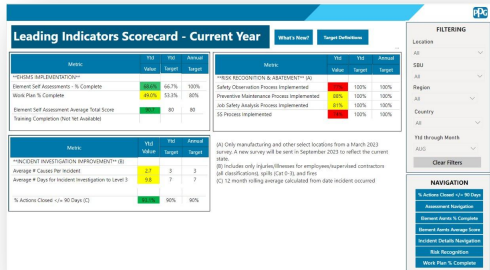
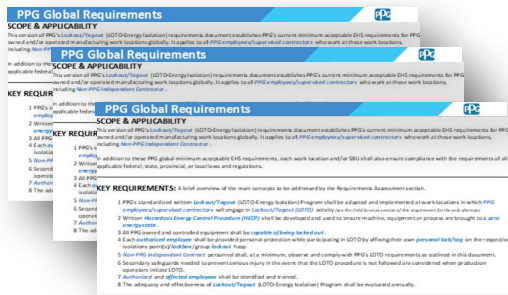
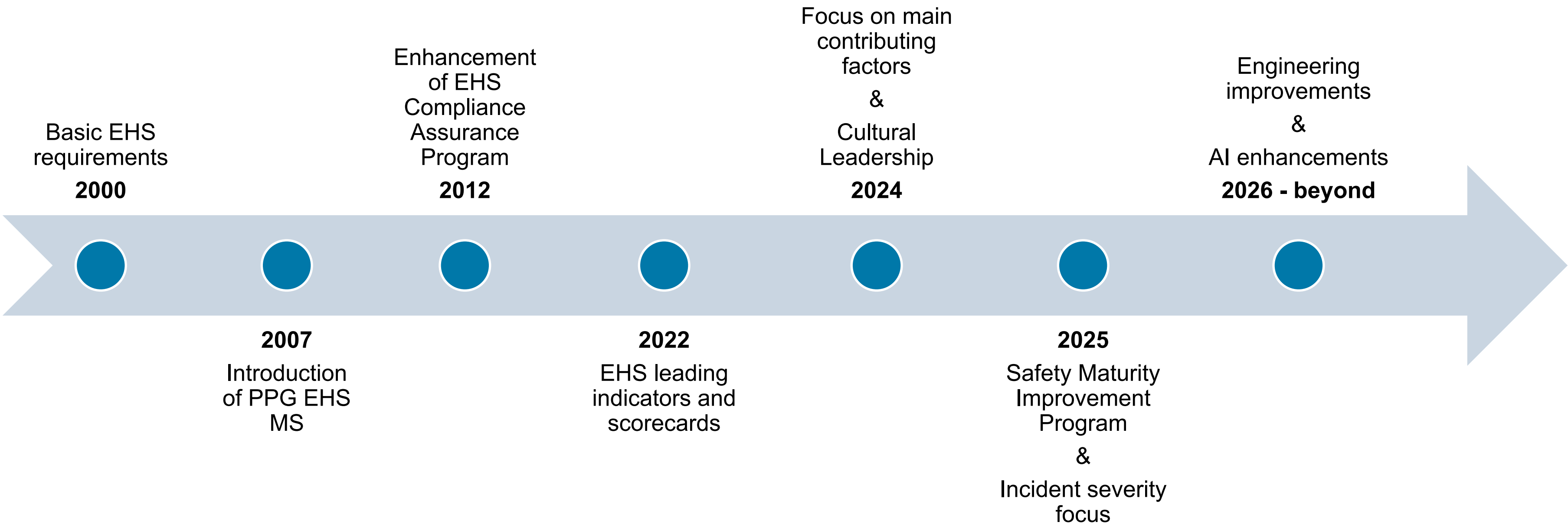
Languages



SBU's Supported



# Advancing EHS Excellence: a continuous improvement journey





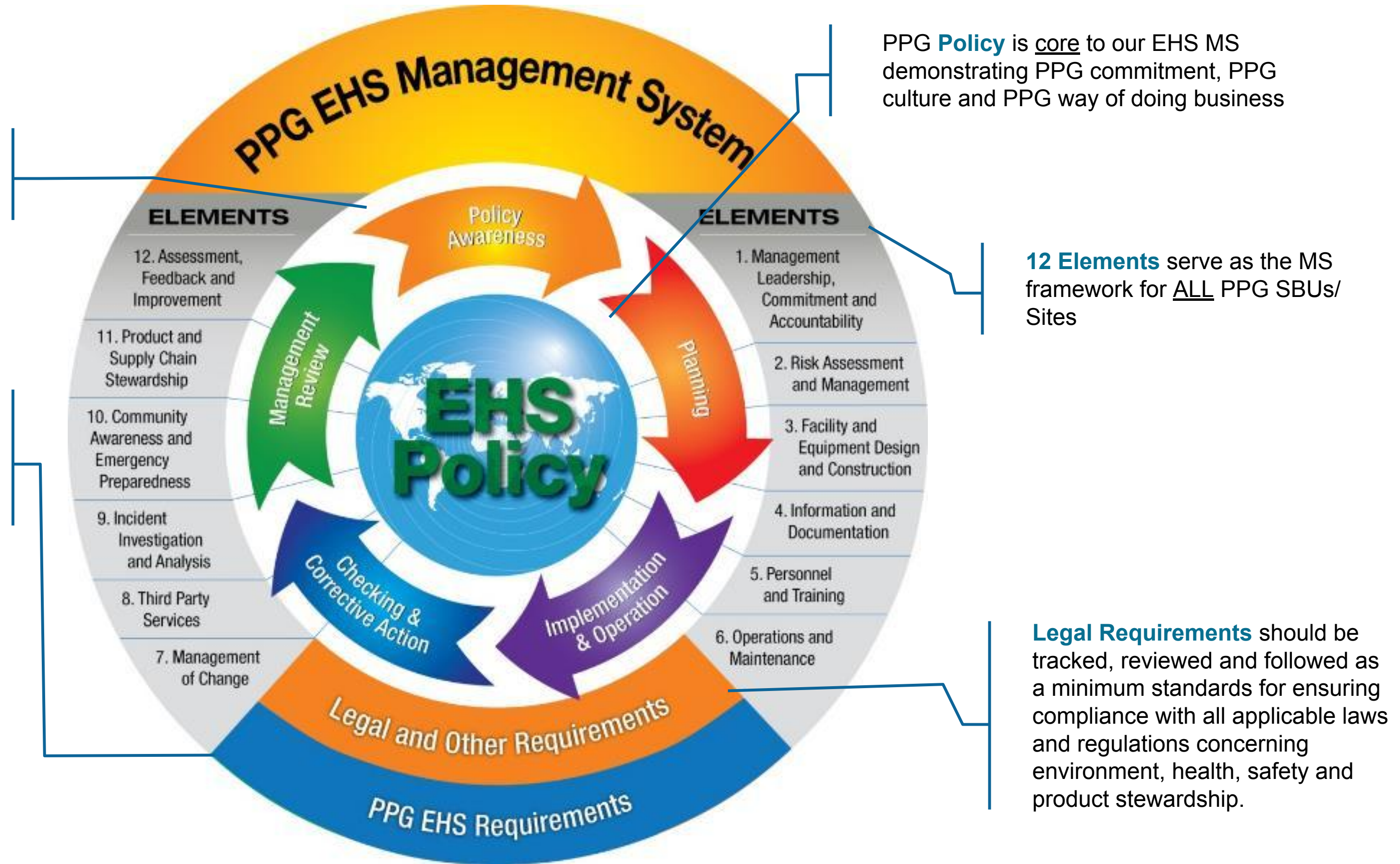
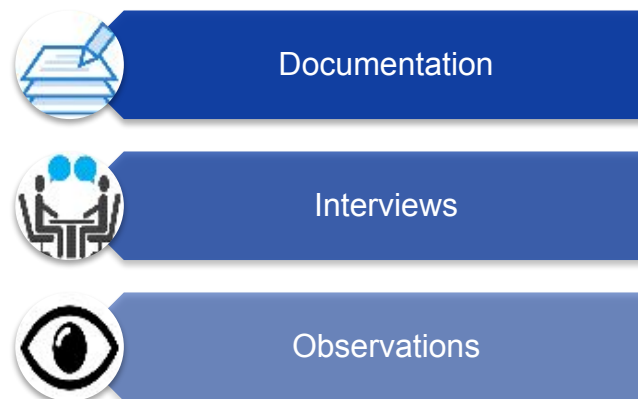
# How

## Our Process

PPG EHSMS implementation is driven by a **plan, do, check, act** business model.

**PPG EHS Requirements** serve to establish an operating standard for EHS expectations globally.

- *Contains principles, expectations, and specific requirements*



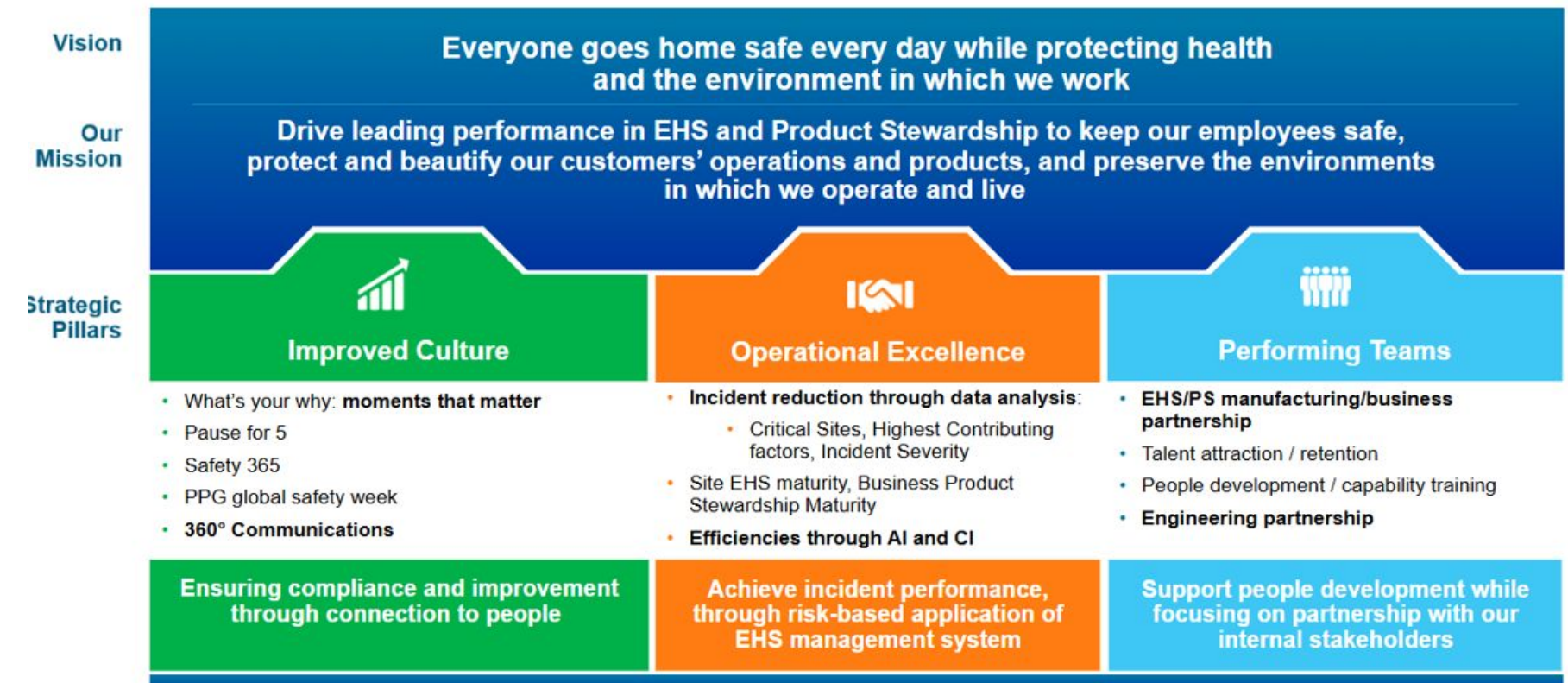
A playbook helps instill a sense of ownership and responsibility in employees



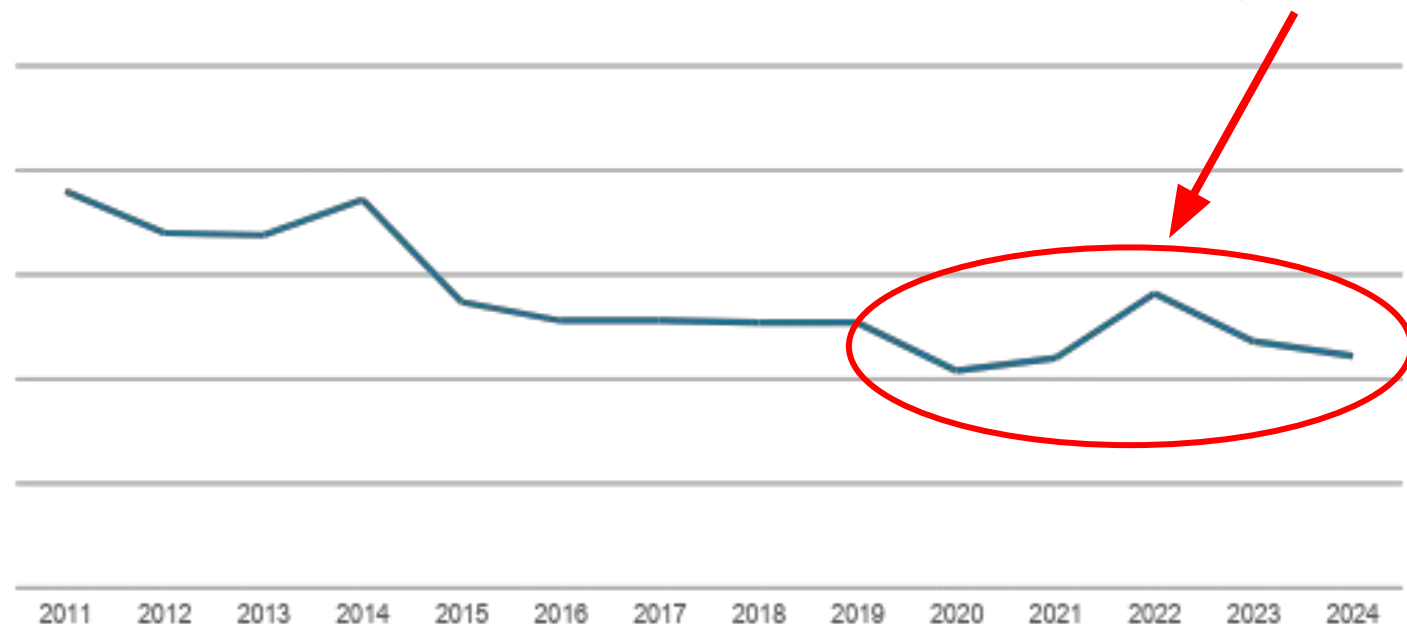
# Stagnated improvement – What's next?

- Strategy Shift

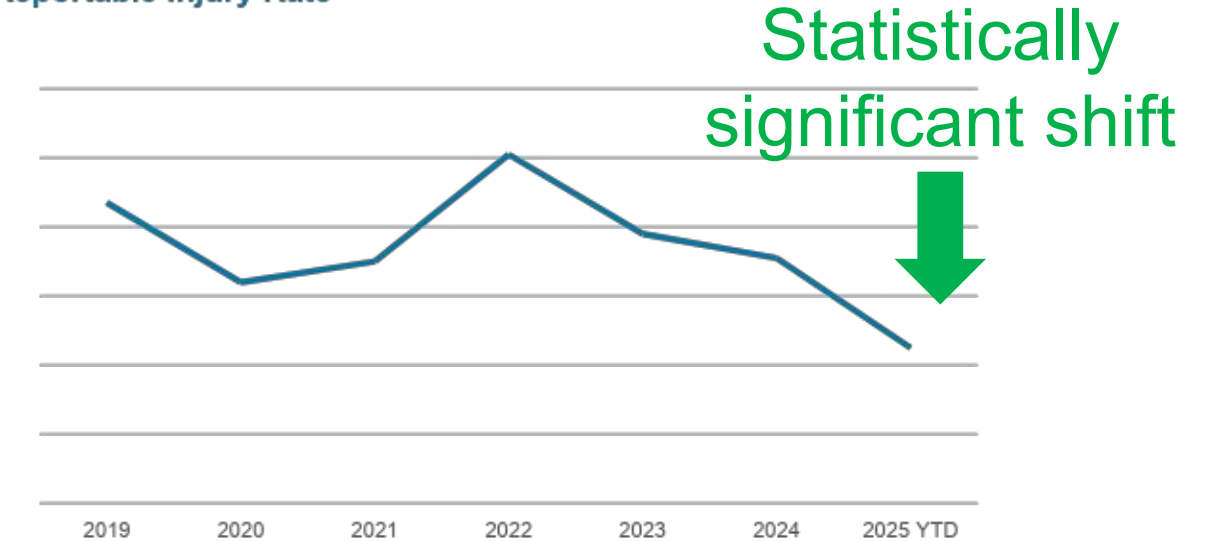
- Data analysis of key contributing factors
- Preventing high-consequence incidents
- Maturity/Risk concept to target the “needle movers”
- Re-energize the safety culture



Total Reportable Injury Rate



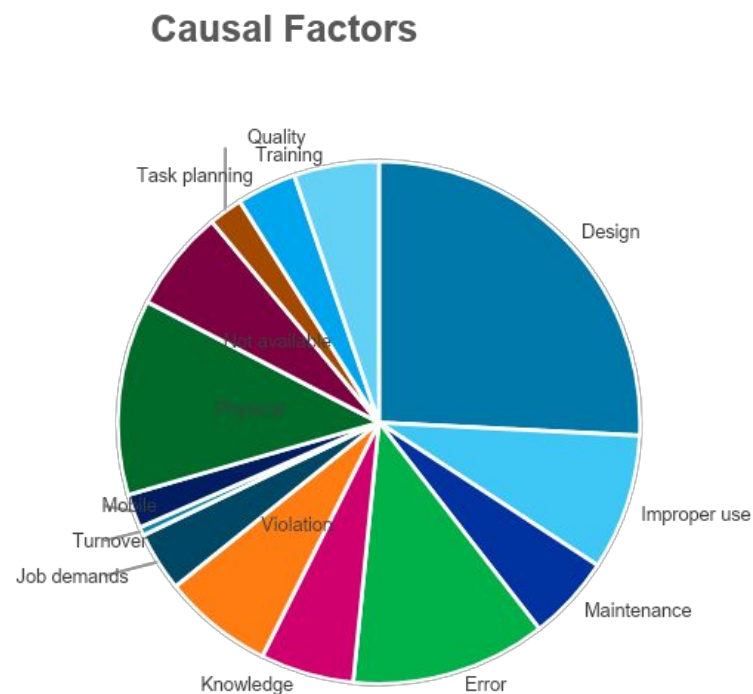
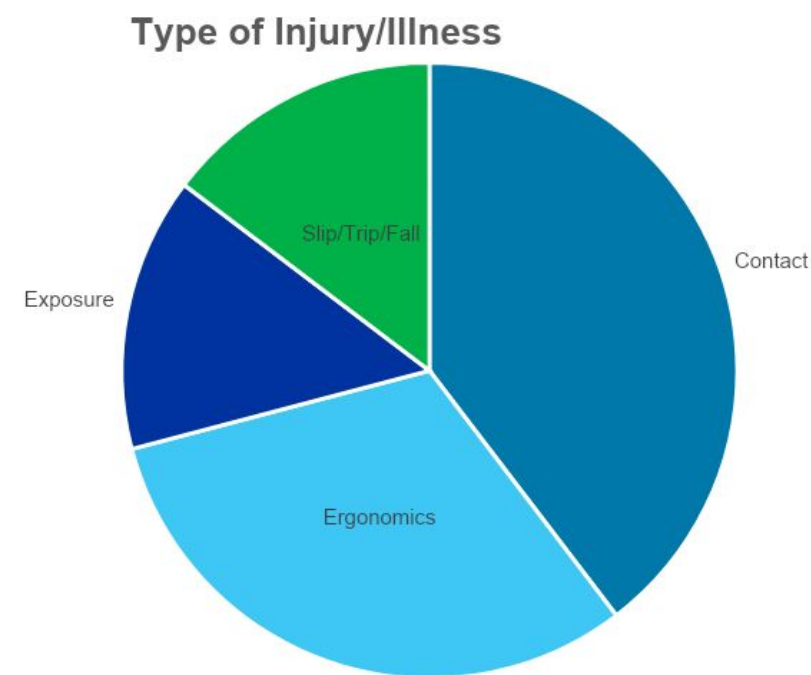
Total Reportable Injury Rate





# Focus on main incident types & contributing factors

Type of Incident	% of total cases	TRI cases	PPG I&I cases	p/SIF cases
Related to Powered Industrial Trucks	10%	20% reduction vs PY	58% reduction vs PY	49% reduction vs PY
Related to Slips/Trips/Falls	15%	28% reduction vs PY	51% reduction vs PY	45% reduction vs PY
Related to Ergonomics	33%	14% reduction vs PY	35% reduction vs PY	100% reduction vs PY



### Cold Weather & Safety Tips for Your Site

**CLEAR PATHWAYS**

- Walkways, stairs, parking areas
- Work places like docking & storage areas
- Shovel snow, spread salt

**OPERATIONS AND COLD**

- Equipment\chemicals\water if freezing can cause hazards\malfunctioning
- Snow\ice can cause heavy load and issues on roofs\structures

**WHEN ENTERING**

- Wipe shoes on mats
- Watch for melting snow or ice underfoot
- Watch for slippery surfaces at entrances

**FOOTGEAR**

- Warm and resistant
- Appropriate for work place and weather conditions
- Good traction\slip resistance

**GET PREPARED**

- Check forecasts & have team supplies ready
- Check areas\tasks\equipment alert employees
- What can happen? Worst case

Winter brings snow, ice and cold temperature with risk of slips, trips and falls, malfunctioning and other serious accidents. The compliance with basic rules like these is fundamental for your and everybody safety!

### Safety Focus: Spill Prevention

The 7 Pillars of Spill Prevention

### Safety Focus: Slips, Trips & Falls

5% increase 2024 YTD  
72% of safety pillars

### Safety Focus: Ergonomics

**33%**  
Ergonomic injuries account for 33% of safety incidents across PPG.

EHS Focus Area for 2025: Reduce Ergonomic Injuries Globally

We're celebrating **20 years** of Ergo Cup project submissions!

- How are you tapping into this repository of ideas?
- Do you have an ergonomic problem we've already solved at a PPG site?
- How can we learn from best practices across the globe?

What are a fit for your workspace. Everyone goes home safe, every day.



# Safety Maturity Evolution Program

1

## EHS Maturity criteria:

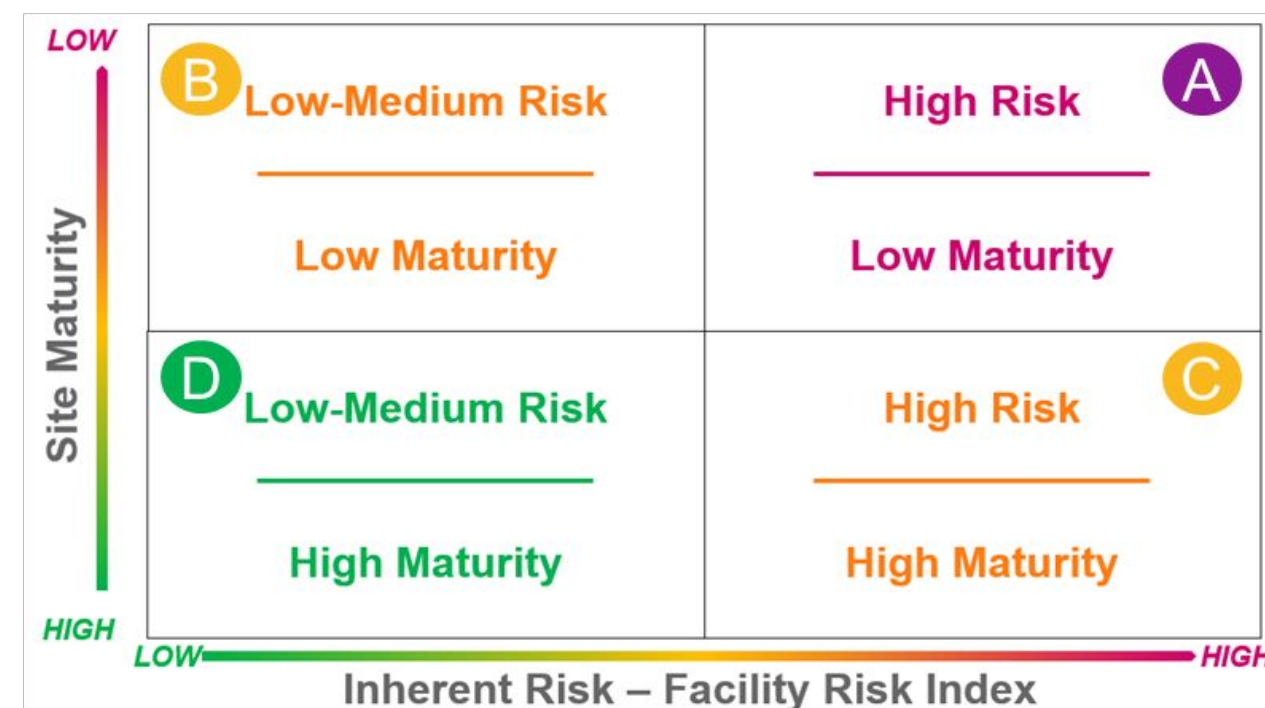
- Incident Rates
- Programs: observations, PMs, JSA, 5S
- Work Plan completions
- Critical topics self-assessments
- Corrective Action progress
- Audit Score

## Inherent Risk criteria:

- Operational, Health, Safety & Environmental complexities
- Process Safety application
- Number of employees
- Regulatory Obligations

2

## Every Site Globally Placed on Matrix:

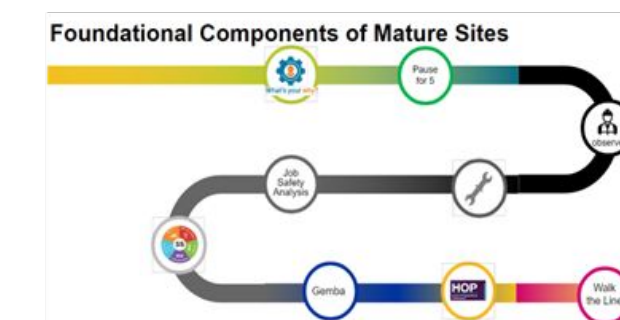


3

## Selection of low maturity sites aligned with business and operational priorities

## Tailored support plan:

- Implement improvement for low maturity sites



- Regular calibrations to avoid drift

## Benefits of the Safety Maturity Program in 2025

Performance improvements YOY for critical sites:

- I&Is: reduction of 65% ; TRIs: reduction of 29%
- Spills: reduction of 21%
- Fires: reduction of 59%
- p/SIFs: reduction of 54%

## Opportunity for 2026

15 critical locations selected for 2026

2025 incidents made up from 2026 critical sites:

- I&Is: 31% ; TRIs: 28%
- Spills: 51%
- Fires: 22%



# Risk-based approach: Using recognized standards to focus on incident severity

- High-severity incidents can have significant human, environmental, reputational and financial consequences
- These incidents are rare, but each occurrence is critical
- Special focus on critical incidents should be part of the EHS fundamentals

## pSIF(\*) Incidents

- SIF Prevention Model adopted by industry to focus on *potentially serious injury or fatality*



- pSIFs, Tier 1 Spills and Tier 1 Process Safety events classified as high severity incidents
- Closure of related corrective actions tracked as leading indicator

## Spills & PS events – Tier 1

- CCPS emphasizes tracking Tier 1 incidents because these events pose the *greatest threat to people, operations and business continuity*



(\*) **pSIF**: Potential for significant injury or fatality  
**CCPS**: Center for Chemical Process Safety



# PPG Global Safety Week 2025

## GLOBAL SAFETY WEEK 2025



### Key components

#### ü Toolkit

- Repository of activities, discussion guides, links to videos, and logistical guidance
- Assets available for printing

#### ü Communications

- Global communications
- Daily leading topic defined
- Common branded assets

#### ü Leader commitment

- Videos from senior leaders
- Leadership F2F at locations around the world
- Approved for annual recurrence





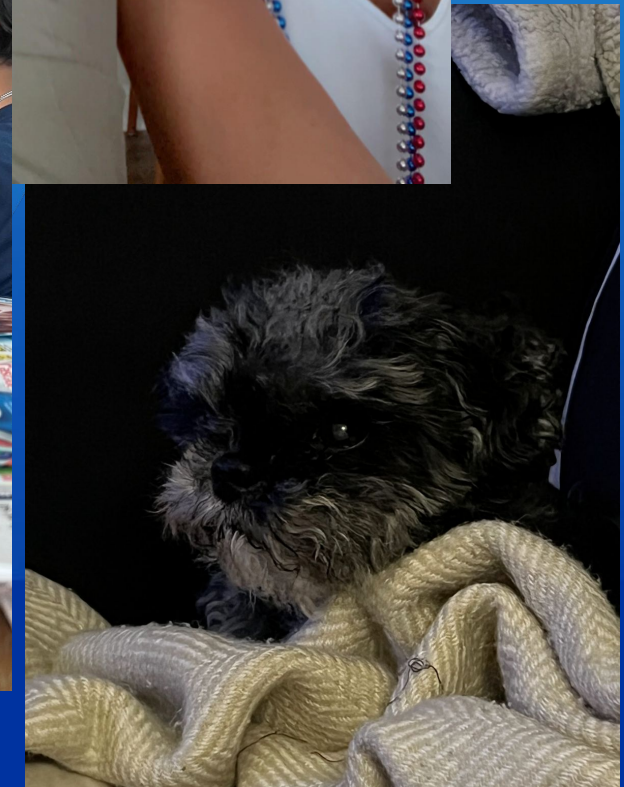
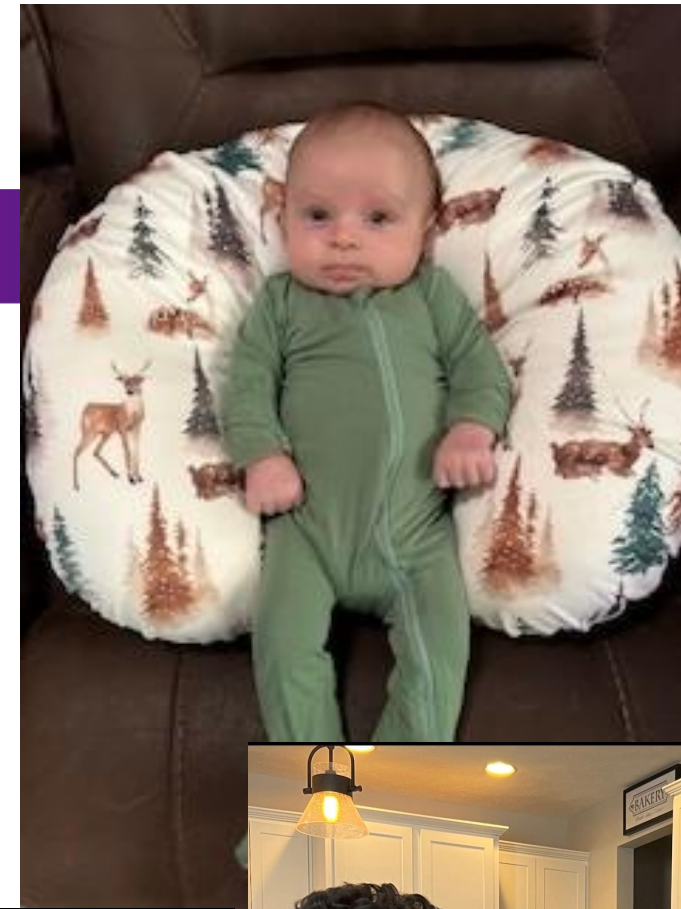


What's your **why?**

**Abby Kis**  
**PPG Technician**

My WHYS:

- Family
- My Future
- Everyone leaving the same way they walked in each day



By sharing our individual "whys," we can spark meaningful conversations around the importance of safety at PPG. Together, we can make safety away of life at PPG.



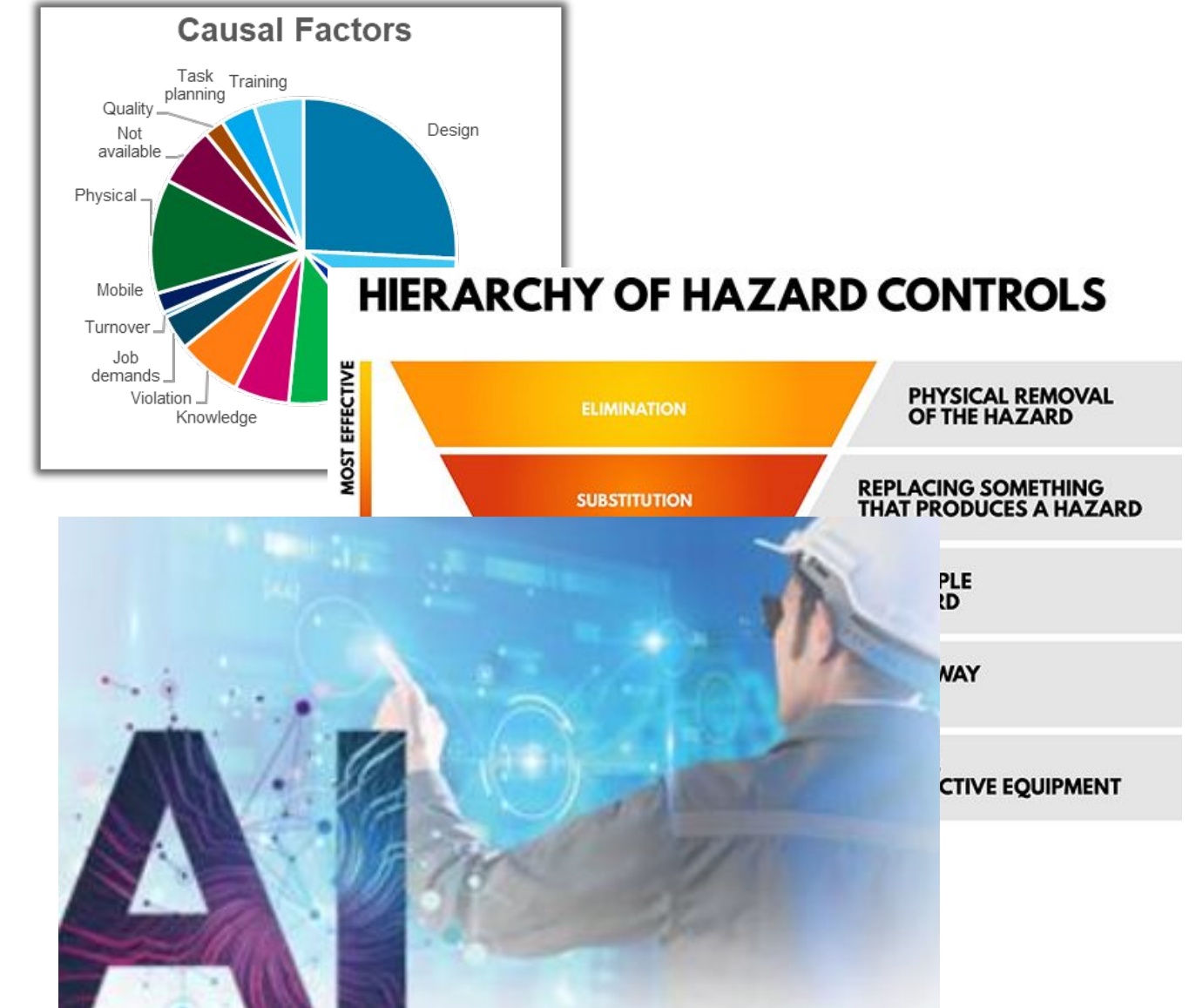
We protect and  
beautify the world®



# Evolution for continuous improvement

- 2026 and beyond
  - Continue data driven focus areas
  - Engineering improvements
  - Introduce AI for data analytics, compliance assurance and hazard identification

Total Reportable Injury Rate



- Approximately 35% of incidents are related to engineering issues
- Continue with improvement programs on:
  - Ergonomics
  - Training and education
  - Hazard recognition



# Key Takeaways



- A strong **EHS Management system** is foundational
  - Need education and ownership across and through entire organization.
- A **strong safety culture** must always be nurtured or it will shift
  - Requires support and participation from CEO through front line
  - **Partnership** with operations and engineering is critical
- **Data driven approach** provides guidance on where to focus
  - Critical sites – enhance fundamentals
  - Address top contributing factors for incidents
  - Keep eye on high consequence incidents
  - Benchmark metrics for best-in-class targets
- Our job is never complete in EHS – **continuous improvement driving to ZERO!**